


VTR - Narrow Vaportight Series

 Versatile energy efficient platform addresses indoor, outdoor and wet location relighting applications.

- Open Air Multi-Deck Parking Structures...
- Bulk Storage Freezers...
- Walk in Coolers...
- Outdoor Canopies...
- Wet Locations...

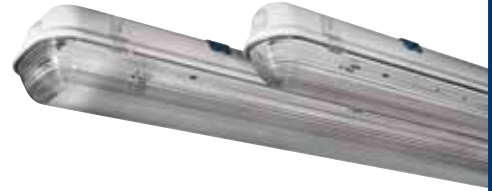
 Parking Decks

- Optional Extra Wide Distribution Optics.
- Optional Hi-Lo Controls. Order with Default Center Lamp (DCL) and occupancy sensor for increased savings while maintaining minimum security lighting at all times.

 Why P2? We deliver more with this platform than our peers.

- Relative Light Output curves on file from -25°F through 155°F.
- Custom layouts and validated IES files for multiple optics configurations.
- Life cycle lumen maintenance studies tailored to parking garages.

 VTR – Configured To Order Vaportights



 Applications

- Excellent for parking decks and cold storage.
- Extremely insect resistant.
- Available up to 3 Lamp cross sections for T8 and 2 lamp cross sections for T5HO.
- Anywhere IP67 is required.
- Suitable for wet locations.
- Listed to UL 1598 standards.

VTR - 1x4 - 2L - T5HO - UL1 - MN - PS - ST - SAW - C8

VTR	1X4	2L	T5HO	UL1	MN	PS	ST	SAW	C8	
Model	Fixt Size	Lamp Qty	Lamp Type	Voltage	Ballast Factor	Ballast Starting	Ballast Grade	Reflector Options	Cord Plug	Occ Sensor

Fixture Series

VTR = 5.5" Nominal Vaportight Gear Tray
VTS = 3.5" Nominal Vaportight Gear Tray

Fixture Size

1x2 = 1x2 Nominal
1x4 = 1x4 Nominal

Lamp Quantity

xL = x indicates number of lamps

Lamp Type

T8 = Linear T8 Lamps
T5 = Linear T5 Lamps
T5HO = Linear T5HO Lamps

Voltage ⁽¹⁾

UL1 = Universal 120-277
UH1 = Universal 347-480

Ballast Factor

XL = Ultra Low Power (.62 - .66)
LP = Low Power (.75 - .78)
MP = Mid Power (.85 - .88)
MN = Neutral Power (.97 - 1.04)
HP = High Power (1.15 - 1.20)

Ballast Starting Method

PS = Programmed Start
IS = Instant Start

Ballast Grade

ST = Standard Grade
UE = Ultra Efficient T8

Reflector Options

GT = Standard Gear Tray, No Reflector
WA = White Aluminum Reflector 90-91%
WAW = White Aluminum Reflector 90-91%, Wide Distribution
EA = Enhanced Aluminum Specular Reflector 93-94%
EAW = Enhanced Aluminum Specular Reflector 93-94%, Wide Distribution
SA = Specification Grade Enhanced Aluminum Reflector 95%
SAW = Specification Grade Enhanced Aluminum Reflector 95%, Wide Distribution

Cord & Plug

C8 = 8' Cord, No Plug
C8/L715 = 8' Cord & Plug (L7-15P)
PQC15 = 15' Cord/Quick Connect

Occupancy Sensor ⁽²⁾

WHx = Wet Location 360 View Hi-Bay Sensor
WLx = Wet Location 360 View Lo-Bay Sensor

Other Options

DCL = Default Center Lamp ⁽³⁾
N5MPL = Plunger Sockets
SSL = Stainless Steel Latches

Numeric Footnotes

- (1) Numeral indicates number ballasts per fixture.
- (2) Numeral [x] indicates number of lamps controlled.
- (3) Requires occupancy sensor. See RWS cutsheet for details on DCL option Hi-Lo Controls.

VTR - Vaportight Series



Standard Mounting Brackets



VTR 5.5" Nominal = 5.28" Width



VTS 3.5" Nominal = 3.31"



Standard Poly Latches



Optional Stainless Latches



2' Nominal = 26.2" length



4' Nominal = 50.2" length

Existing Systems

Existing Lamp / Ballast System	Lamp Quantity & Type		Mean Lumens Per Lamp	Mean Lumens Per Fixture	Ballast Factor	Net Lumens Per Fixture	Input Watts	Net Lumens Per Watt
1L40-T12 Mag	1	F40/T12/WM	2,280	2,280	0.88	2,006	43	47
2L40-T12 Mag	2	F40/T12/WM	2,280	4,560	0.88	4,013	72	56
3L40-T12 Mag	3	F40/T12/WM	2,280	6,840	0.88	6,019	115	52
HPS-150 Standard	1	HPS150	13,500	13,500	1.00	13,500	190	71
MH-175 Standard	1	MH175	8,775	8,775	1.00	8,775	210	42

Re-Lighting Options

Proposed Lamp / Ballast System	Lamp Quantity & Type		Mean Lumens Per Lamp	Mean Lumens Per Fixture	Ballast Factor	Net Lumens Per Fixture	Input Watts	Net Lumens Per Watt
1L32-T8-MP Elec	1	F32T8/841	2,800	2,800	0.87	2,436	31	79
2L32-T8-MP Elec	2	F32T8/841	2,800	5,600	0.87	4,872	53	92
2L32T8-HP Elec	2	F32T8/841	2,800	5,600	1.15	6,440	73	88
3L32-T8-MP Elec	3	F32T8/841	2,800	8,400	0.87	7,308	80	91
3L32T8-HP Elec	3	F32T8/841	2,800	8,400	1.15	9,660	109	89
1L54-T5-HO Elec	1	F54/T5HO/841	4,600	4,600	1.03	4,738	62	76
2L54-T5-HO Elec	2	F54/T5HO/841	4,600	9,200	1.00	9,200	117	79

General Notes

- Lamp/ballast system values shown are a general reference intended to supply a quick comparison of several common lamp/ballast systems, the associated energy consumption, and net lumen output.
- Values shown are based on normal operating temperatures and at 277 volts.
- There are many operating variables that affect system output, in addition to rating variances from brand to brand.
- All T8 electronic ballast values shown are based on Ultra Efficient (aka 3rd Generation) T8 ballasts.
- All T5 and T8 lamp values shown are for basic grade lamps. Extended life and higher lumen lamps types are available.
- In addition to those shown there are a wide variety of systems to choose from, each with distinct features and cost points.
- Please consult the lamp/ballast manufacturer's catalogs for the detailed information required to model your system.